

GIERTZ GALLERY AT
PARKLAND
COLLEGE

AND

40 NORTH:
CHAMPAIGN
COUNTY ARTS
COUNCIL

AROUND THE BLOCK III
ARTISTS FROM OUR *(VIRTUAL)* NEIGHBORHOOD



giertz gallery
AT PARKLAND COLLEGE

PARTICIPATING ARTISTS

Louise Audrieth
Gary Beaumont
Jess Beyler
Jo Birdwell
Daniel Bornt
Taylor Braasch
Thomas Brewer
Anna Brown
Saxon Burns
Christopher Carlson
Robert Chapman
Yeong Choi
Ann B. Coddington
M. Ben Cohan
Cathrine Cunningham
Keenan Dailey
Beth Darling
Fred Delcomyn
Pamela Ek

Mary Emmons
Barbara England
Jeff Evans
David Favre
Viktoria Ford
Tina Giamberdino
David Gordon
Stacey Gross
Crystal Hartman & Devin Frank
Connie Hosier
Sandy Hynds
Sara Jahn
Larry Kanfer
Eunjoo Kang
Rashmi Kapoor
Hye-Min Kim
Bruce A Kloth
Deborah Kloth
Philip Knox

Carolyn Knox
Casey Lowry
Sarah Marjanovic
Paula McCarty
Ann McDowell
Joyce D. Meyer
Melissa Mitchell
Charlie Mitsdarfer
Amanda Mitsdarfer
Patricia Monigold
Michael Murray
Christina Nordholm
Shannon Percoco
Marli Pessin
Robert Petersen
Toni Pitts
Claire Pritchard
Fraya Replinger
Annelise Rhoads

Erica Robertson
Mandy Roeing
Ann Rund
Gail Rost
Andrea Shields
Birute Simaitis
Lynn Hawkinson Smith
David Spears
Phil Strang
Bonnie Switzer
Mohan Tracy
Natalie Troyer
Miriam Tworek-Hofstetter
Kuldeepa Vartak-Mehta
David Wantroba
Rosalind Faiman Weinberg
Catherine Wiesener
Melinda Wilcox
Charles Wisseman
Sarah Wisseman





JUROR

CAMILLE WILSON WHITE

Executive Director
Oak Park Area Arts Council

Camille is actively involved in the Oak Park community and has served on numerous committees for both District 97 elementary and District 200 Oak Park & River Forest High Schools. She is active with LAN (Local Arts Network) and serves as co-chair of the LAN. Camille is a board member of the Arts Alliance Illinois, the state arts advocacy organization.



giertz gallery
AT PARKLAND COLLEGE

PARKLAND
COLLEGE



ILLINOIS
ARTS
COUNCIL
AGENCY

Giertz Gallery acknowledges support from the Illinois Arts Council Agency.

Thank you!

Louise Audrieth

Untitled

watercolor and marker

9 x 12 inches

2021

"The differences between crows and ravens are subtle until you look at them side by side. Ravens are bigger than crows and less refined. Their beaks are larger and blunter, and their feathers are rougher. That said, they are every bit as intelligent. This fellow is a raven."



giertz gallery
AT PARKLAND COLLEGE

Gary Beaumont
Nested Turquoise Vessel
stoneware
11 x 12 inches
2021

"This is hand-built using white stoneware clay. It is fired with a turquoise glaze and can be displayed nested or apart."



Jess Beyler

Underwater Currents

oil on canvas

42 x 42 inches

2019

"Something might look calm and unruffled on the surface, but sometimes, dancing underneath the obvious, there is a great deal of power and passion. This painting can be taken literally as a diagram of underwater turbulence or it can be viewed metaphorically, as a diagram of a soul."



giertz gallery
AT PARKLAND COLLEGE

Jo Birdwell

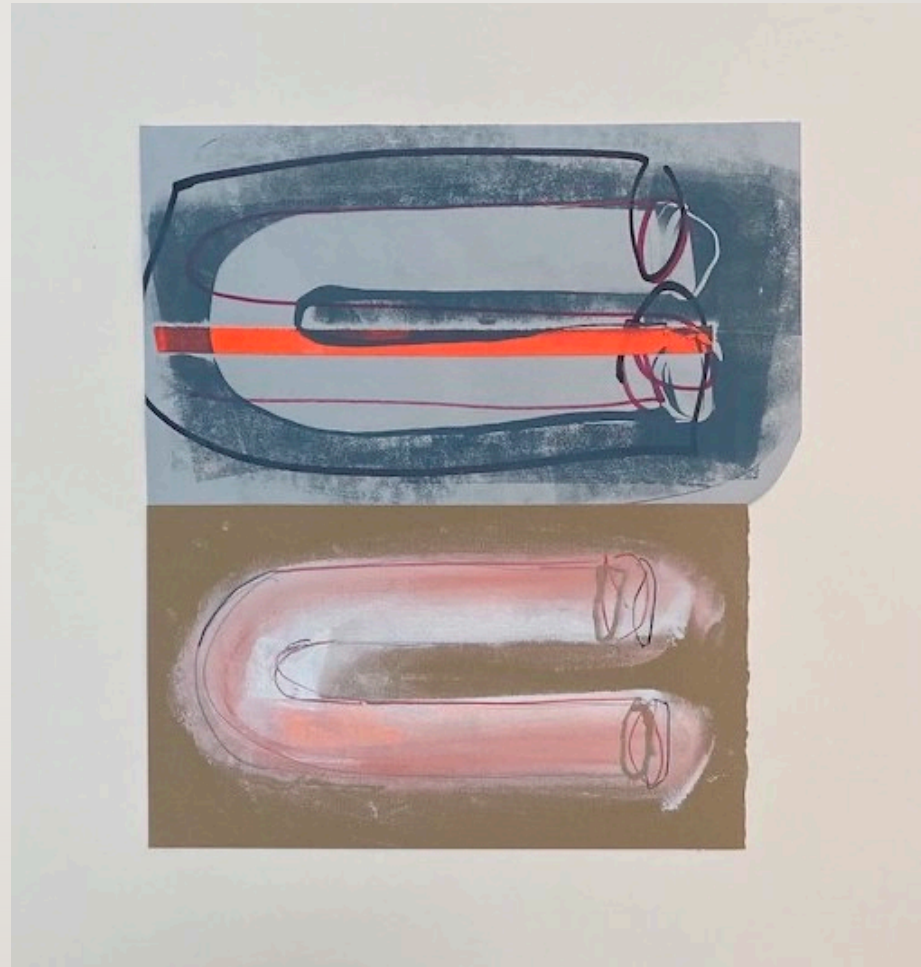
U Turn 2

Printmaking ink, marker, ink pen,
charcoal pencil

22 x 22 inches

2020

"I am an abstract, non-objective
maker; however, I respond to the
everyday objects and images around
me on my daily commute and walks.
This monotype is from a new suite of
prints using additive and subtractive
gesture with mixed materials."



giertz gallery
AT PARKLAND COLLEGE

Daniel Bornt

The Bridge

acrylic on canvas

12 x 12 inches

2018

"The enigma of a bridge provides an endless source of mystery. Being on a bridge is to be in a liminal zone between the two sides or two states of being. It can also be seen as either a portal or a state of departure."



giertz gallery
AT PARKLAND COLLEGE

Taylor Braasch
Phantom Pain, 2021
oil on canvas
5 x 7 inches
2021

"I'm always exploring the idea of the loss of feeling; sometimes literal, sometimes not. Just brief moments and memories of touch. Brief flashes that surge through everyday thoughts, stirring up old feelings like sharp chest pain."



Thomas Brewer

Bronze Silo

thrown and drawn on stoneware with bronze
wood ash glaze

11 x 5 x 5 inches

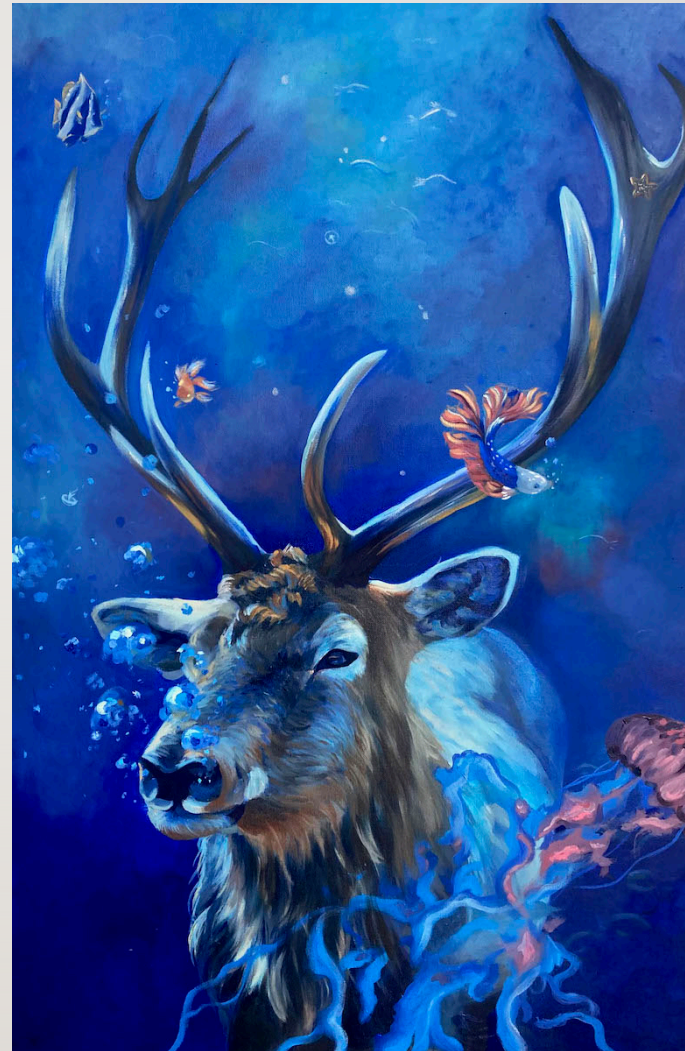
2019

"This is inspired by Chinese ceramic barnyard scenes."



Anna Brown
Submerged
oil on canvas
36 x 24 inches
2021

"Earth's animals are forced to take refuge
underwater in order to survive. Elk and marine
life become acquaintances as they adapt to a
new way of life."



Saxon Burns

Forest Of Memory

archival inkjet print of a manipulated 35mm negative

11 x 7.33 inches

2021

"I've spent a lot of time during this age of illness exploring moods in film photography. I like how the organic grain of film, combined with lens filters and Photoshop, creates otherworldly vistas that could be from a fantasy novel or the countryside outside an elvish capital."



giertz gallery
AT PARKLAND COLLEGE

Christopher Carlson

Lotus Pod

Indiana limestone, iron oxide stain

8 x 8 x 5 inches

2019

"This was a first experiment with representational carving in limestone. I chose a natural form that I love for its pattern and textures, and worked at 2x scale for its impact and to be able to better capture the details."



giertz gallery
AT PARKLAND COLLEGE

Robert Chapman

Lydia

mixed media & assemblage on

hand-made paper

and carved wood

38 x 50 inches

2021



giertz gallery
AT PARKLAND COLLEGE

Yeong Choi

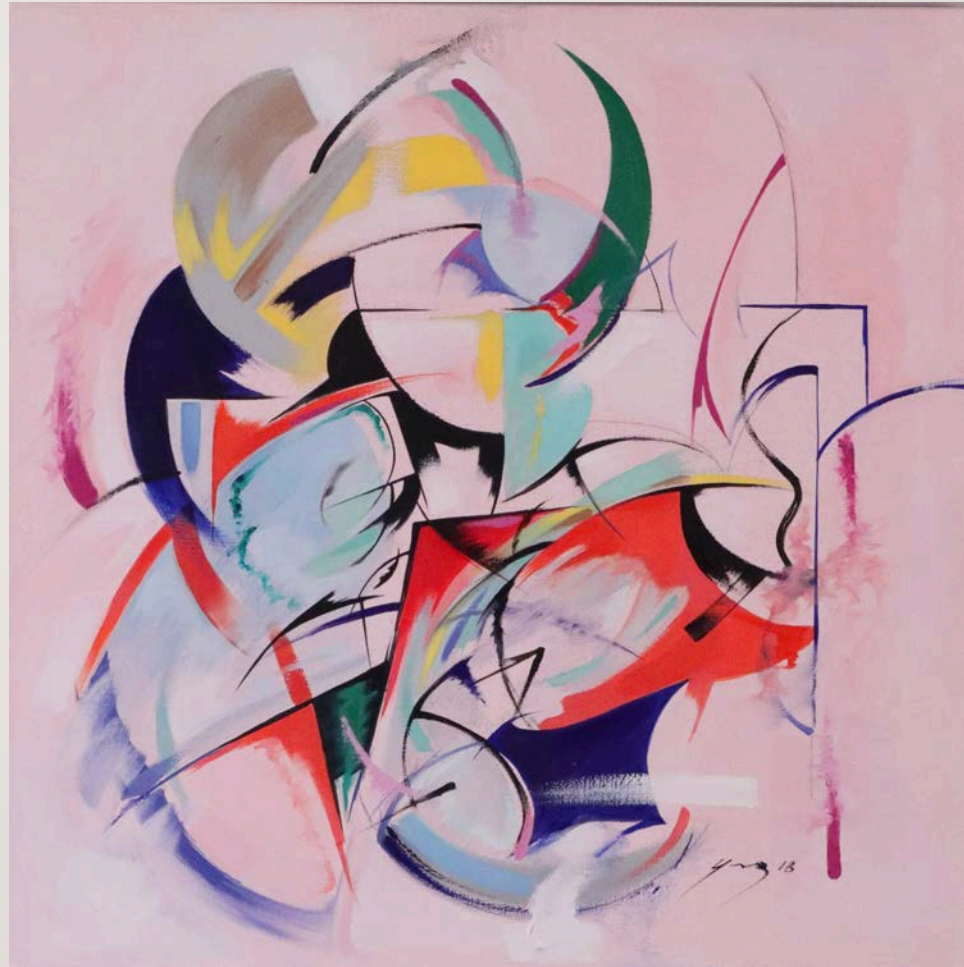
Subconscious I

oil on canvas

24 x 24 x 1½ inches

2018

"What we imagine is often governed by fear, hope, or the lingering of a dream. I am looking for true life in my inner world between unconsciousness and consciousness. Sometimes my work, which looks like music and dance, is developed into a language of my spirituality, energy, and meaning in shape, color, and line."



giertz gallery
AT PARKLAND COLLEGE

Ann B. Coddington

144,000

twined linen sculpture

72 x 20 x 18 inches

2021

"I began this piece last September when the US was close to 200,000 deaths caused by the coronavirus pandemic. I wanted to make a piece that made tangible such a vast number. This sculpture ended up at 144,000. Each stitch represents a person lost to the virus. I photographed it in relation to the human body to reveal the scale."



giertz gallery
AT PARKLAND COLLEGE

M. Ben Cohan

Conversation (Pliers)

graphite on Stonehenge paper

22 X 30 inches

2020

"During quarantine, I would connect with a small group of friends from graduate school. During our group calls, I would stage objects and draw for the duration of our visit. The Conversation drawings are a result of those interactions."



giertz gallery
AT PARKLAND COLLEGE

Cathrine Cunningham

Virus

brown speckle clay with black iron oxide
and red glaze

5 x 5 x 5 inches

2020

"The Covid-19 virus has dominated our lives for the last year and this sculpture was inspired by the many pictures of the virus in the news. The challenge was how to fire a piece with such delicate appendages!"



Keenan Dailey

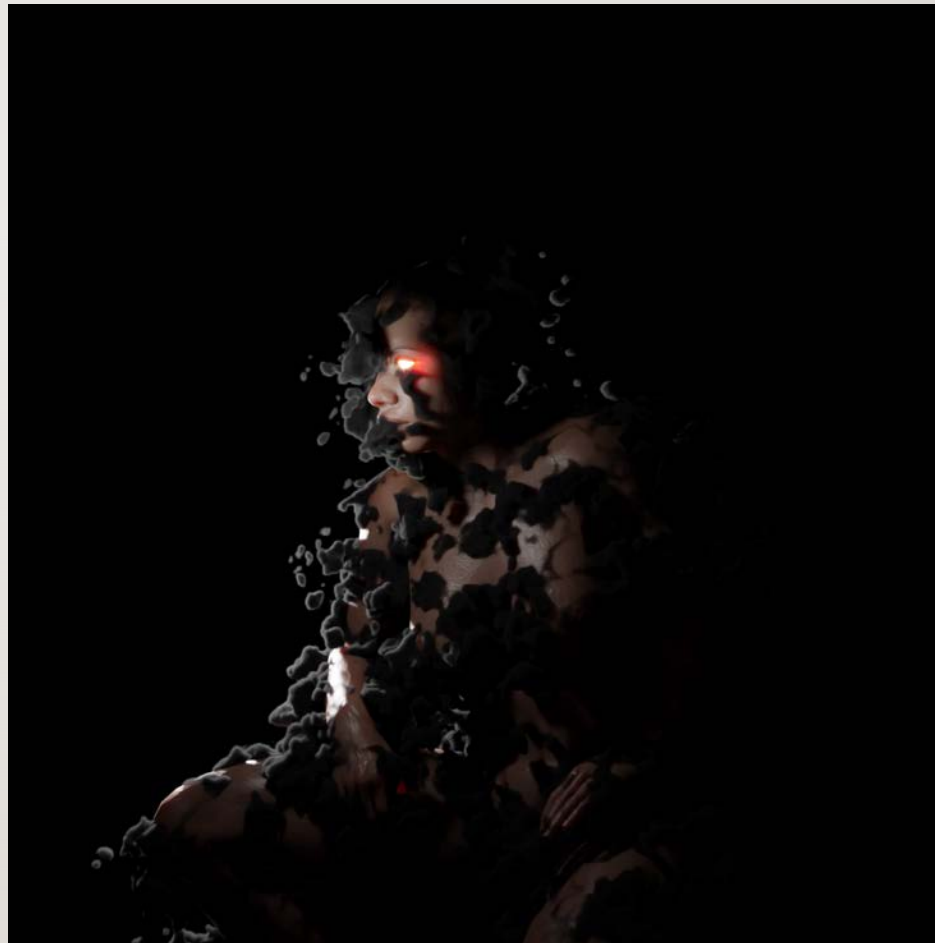
The Old Gods

Blender 3D, Adobe Premiere Pro

2160 x 2160 pixels

2021

"This piece is the image of a black woman as an old god. The watchful yet forgotten creator of thunder."



giertz gallery
AT PARKLAND COLLEGE

Beth Darling

Laurentian Lake

acrylic on canvas

48 x 48 inches

2018

"This piece is inspired by my childhood in the Canadian woods canoeing on the lakes in the Laurentian Mountains north of Montreal, Quebec, where I was born. Any visual artist interpreting the landscape before them relies on drawing skills and mark making vocabulary, but the real work of painting occurs in the artist's psyche. The product of this concentration, mediation, and study is a synthesis of self and reality."



giertz gallery
AT PARKLAND COLLEGE

Fred Delcomyn

Storm Front

Photograph

12 x 18 inches

2021

"Prairies present open vistas that allow you to enjoy the full effect of a sunset. In this image, the setting sun paints the clouds of a weather front to enhance the effect."



giertz gallery
AT PARKLAND COLLEGE

Pamela Ek
Winterscape
watercolor crayons on
clayboard
16 x 20 inches
2019

"In my painting, I try to share the
beauty of nature with the viewer."



Mary Emmons
Amsterdam
watercolor
11 x 8 inches
2019

"To say I'm hooked on watercolor as a medium to capture the feeling of a summer's day in Amsterdam would be an understatement. Now I share my experience with you, an audience who can appreciate watercolor and a summer's day in Amsterdam."



Barbara England

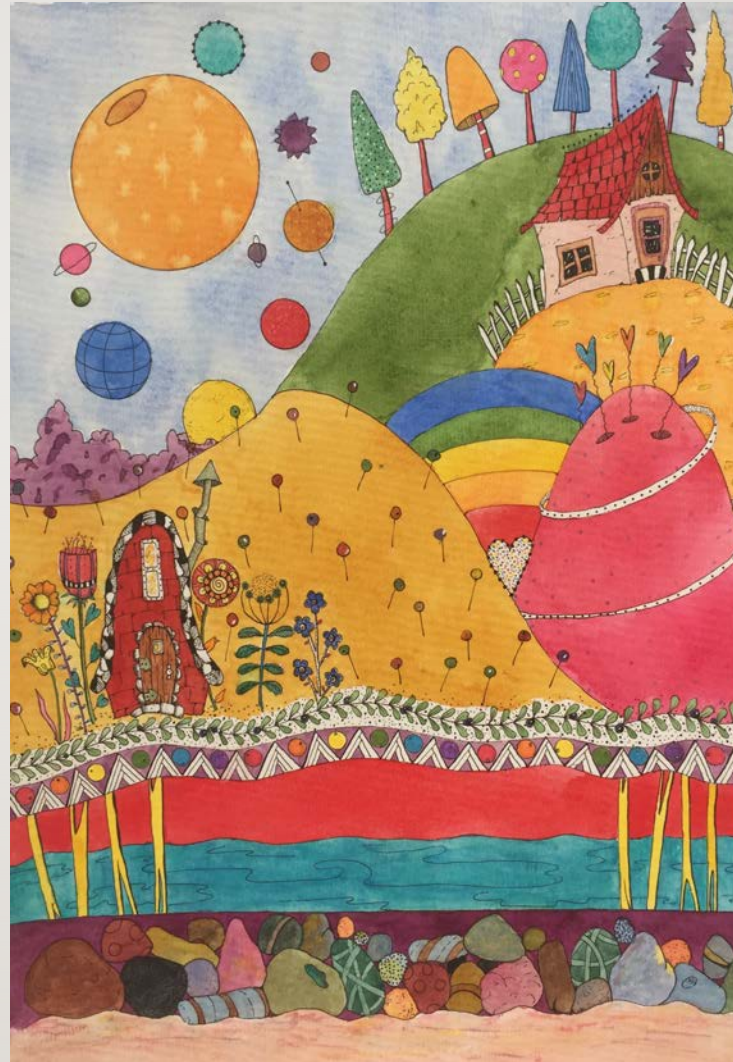
Imagine

ink, watercolor and gel pen

14 x 10 inches

2021

"A place that exists only in one's mind is escape for both the artist and viewer. This piece is whimsical and happy."



Jeff Evans

Pointing Tree

digital color photo

14" x 11" inches (framed)

2020

"I photograph ordinary, everyday things that usually don't merit more than a glance, but when looked at a second time are seen to be absurd and out of the ordinary."



giertz gallery
AT PARKLAND COLLEGE

David Favre

Breakfast Buddy

ceramic stoneware with glaze and acrylics. stainless steel and copper accent knives

18 x 9 x 9 inches

2020

"This pre-Columbian inspired ceramic art is also functional. Bagels can be stored in the lidded container. Peanut butter or other spread can be stored within the head. The hat piece is removable and can stand upside down to pour juice into its reservoir. Knives can be removed to spread the peanut butter. Earrings swing and contain the artist stamp."



giertz gallery
AT PARKLAND COLLEGE

Viktoria Ford

Breakthrough

oil on linen

60 x 40 inches

2021

"This past year has been particularly heavy and yet there has been movement and moments of lightness of being. There is a shift, and I drew on that feeling for this painting."



Tina Giamberdino

Untitled

acrylic paint on canvas

8 x 10 inches

2020

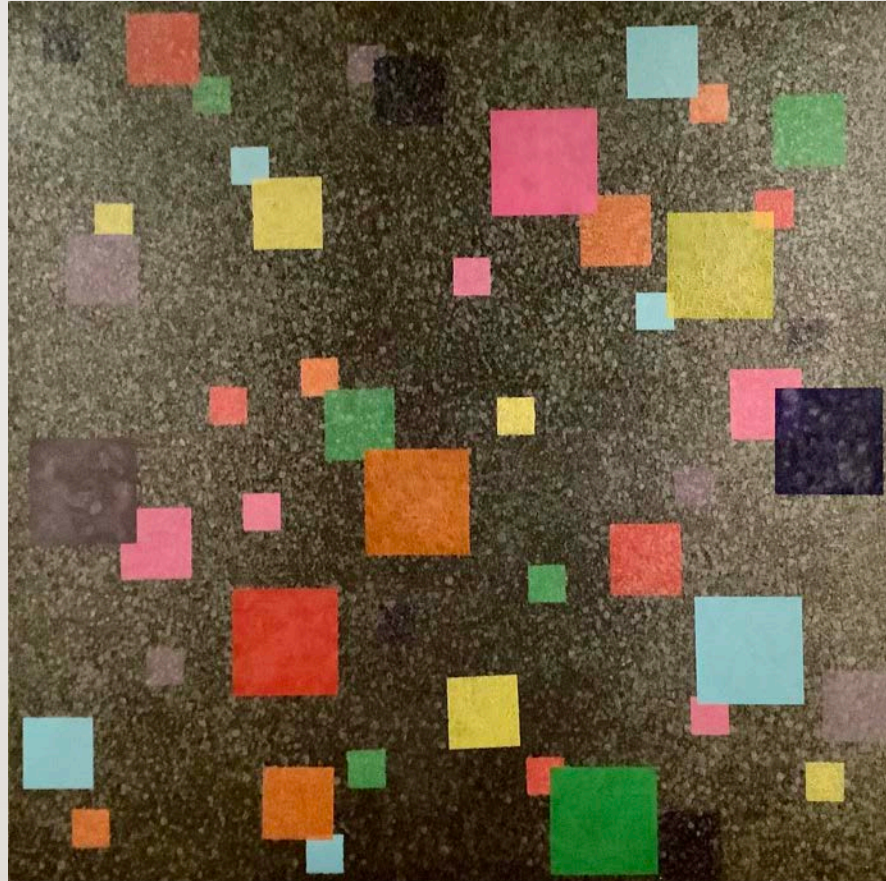
"A verse from a song inspired this painting. 'You grow roses on my barren soul', by NeedtoBreathe. This is what I saw in my mind."



giertz gallery
AT PARKLAND COLLEGE

David Gordon
Untitled
acrylic on canvas
36 x 36 inches
2020

"I returned to painting after many years, but used a new medium for me - acrylics, and black gesso with silver sprayed between layers of colored squares."



Stacey Gross

Shizumeru

cyanotype on fabric

84 x 60 inches

2019

"This piece reflects my interest in the cyanotype process and its possibilities. Cyanotype is one of the earliest and most direct photographic processes. Images are produced by exposing the sensitized material to sunlight. 'Shizumeru' is a life-size contact printed cyanotype."



giertz gallery
AT PARKLAND COLLEGE

Crystal Hartman and Devin Frank

White Chocolate Milk

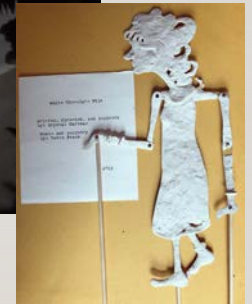
video: paper, paper pulp, thread, light,
balsa wood

Sounds by Devin Frank

8:05 minutes *

2019

"When I was twelve my parents took us away from Durango to spend an extended time north of Ubud, Bali, Indonesia. I offer a tiny glimpse into that place. I experienced my first hint of homesickness and asked a woman from the village if she could make me chocolate milk. I later came to discover that she had melted white chocolate bars and whipped them into the milk. It was divine!"



giertz gallery
AT PARKLAND COLLEGE

Connie Hosier

Flower In The Mist

watercolor on cotton paper

10 x 14 inches

2021

"Flowers offer natural designs that forever intrigue my eye where white is never just white but a subtle rainbow of shades and tones."



Sandy Hynds

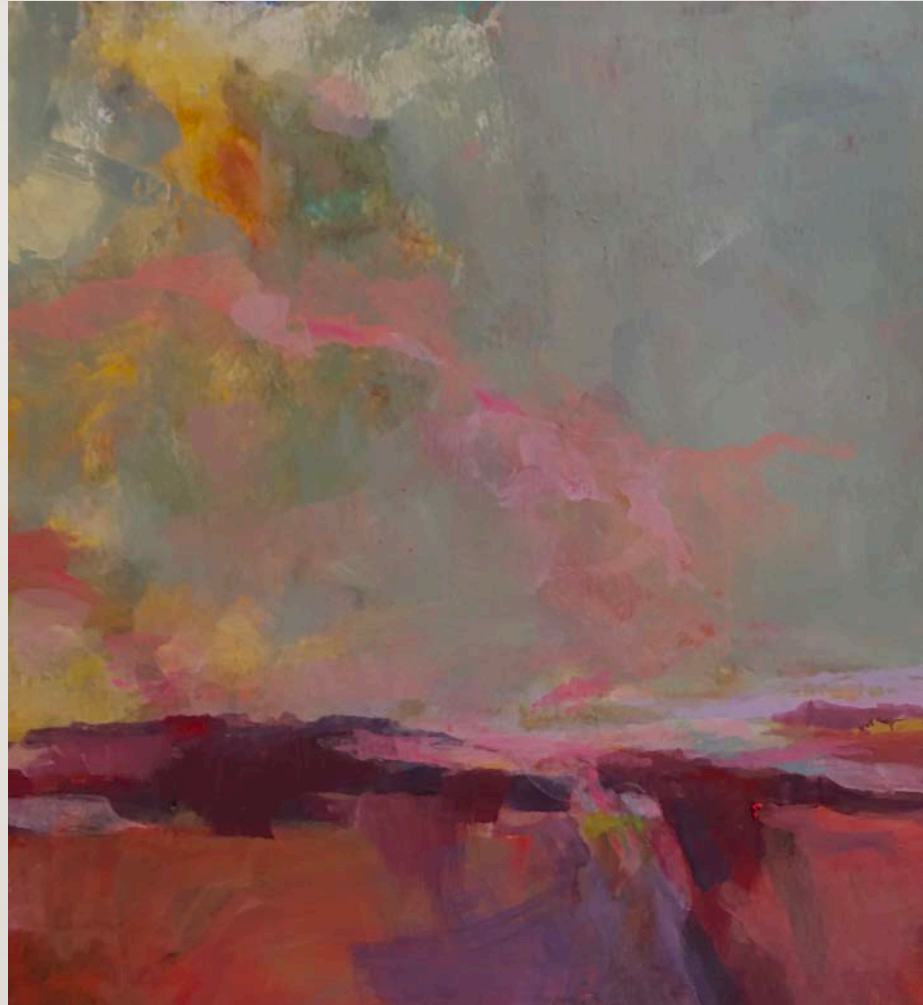
Prairie

acrylic on paper

12 x 11 inches

2020

"A sense of place and time again draws me to the prairie, which surrounds my community. It is constantly changing with the time of day, what is growing, the weather, and time of year. The sky is always changing so I created an interacting environment."



giertz gallery
AT PARKLAND COLLEGE

Sara Jahn
Precipice
oil on panel
8 x 10 inches
2021

"'Precipice' juxtaposes two traditional painting genres - still life and landscape - setting a drenched bunch of grapes against distant hills consumed by wildfire. It's both beautiful and unsettling, a painting on the edge of disaster, calling attention to the issues of consumption, environmentalism, and climate change."



Larry Kanfer

Corn In The Sky

digital photography on stretched canvas, resin
and organic materials

32 x 24 x 5 inches

2020

"In my imagery, I celebrate the magnificence of everyday, revealing the story beyond the superficial, using strong composition, contemporary substrates, mixed media and an element of serendipity. The stretched canvas original photograph is expanded into multi-dimensions using resin, and organic substances."



giertz gallery
AT PARKLAND COLLEGE

Eunjoo Kang

Fall Coming

glazed and fired porcelain

4½ x 4¾ x 3¼ inches

2018

"Every year, there comes a graceful flower signaling summer yielding to autumn. I wanted to mark this nature's faithful beauty on a mug to celebrate."



giertz gallery
AT PARKLAND COLLEGE

Rashmi Kapoor

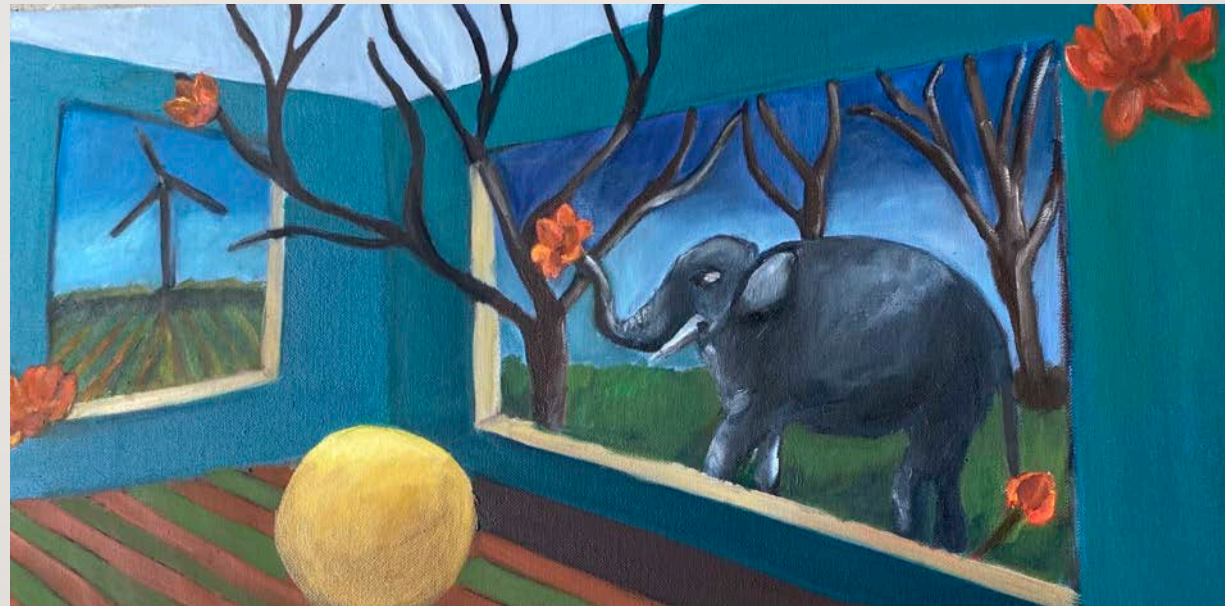
Dreams

oil on canvas

12 x 24 inches

2020

"This painting is a bridge of memories of my time spent in India and my life here."



Hye-Min Kim

Springtime

Oribe, celadon, and white glaze on white stoneware
clay

5 x 3 $\frac{3}{4}$ x 3 $\frac{3}{4}$ inches

2021

"This narrow-necked bud vase features a nature-inspired color
trio, poured and layered to create a dynamic and engaging
experience from every angle."



giertz gallery
AT PARKLAND COLLEGE

Bruce A. Kloth

Kloth Bruce Fruit Bowl

stoneware

4½ x 12 inches

2020

"This piece of functional ware reflects my interest in stamping and the use of symbols."



Deborah Kloth

Heavenly Wings

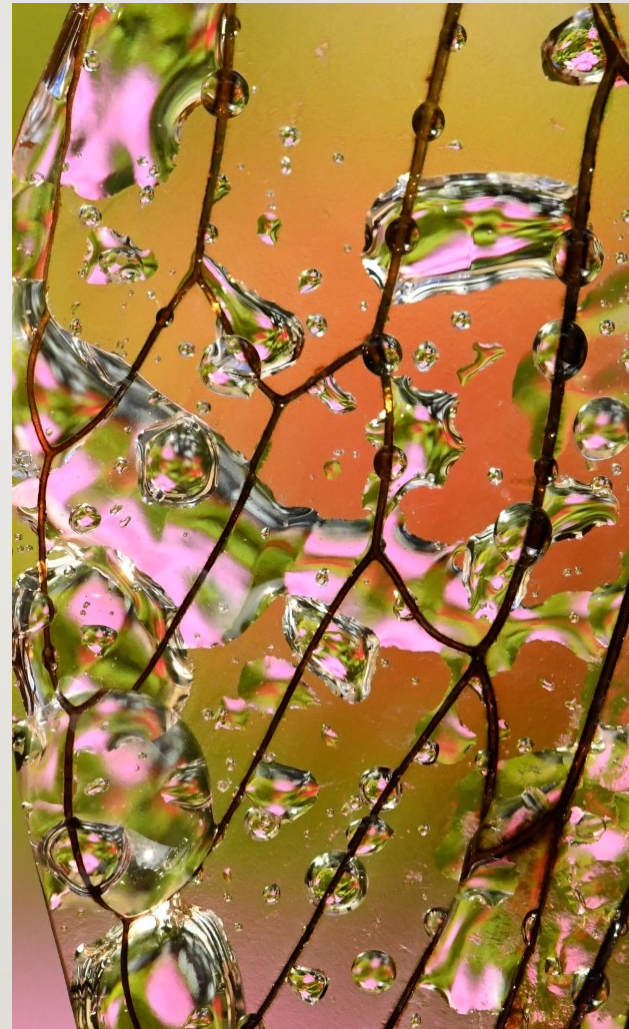
1/2000 sec, f/13 -0.3 step, ISO2500,

Nikon D850, 105 mm

Original 8256 x 5504 pixels

2018

"The inspiration for this came from finding a cicada wing stuck in a large spider's web. I loved the lineal lines in the wing contrasted with web design. I found one covered in rain and dew drops. This was taken with impatiens flowers in the background."



giertz gallery
AT PARKLAND COLLEGE

Carolyn Knox
Seeds Of Women: Revolution
photograph
variable
2020

"This 'Seeds of Women' series is informed by the influence of childhood cultural memories and experiences on women growing into adulthood in Guatemala and Bolivia. This Zinnia flower is native to America and Mexico and symbolizes remembrance and saying goodbye. Versailles (Women's March on Versailles) and Place de la Concorde in Paris are symbolic of revolution for civil rights. "



Philip Knox

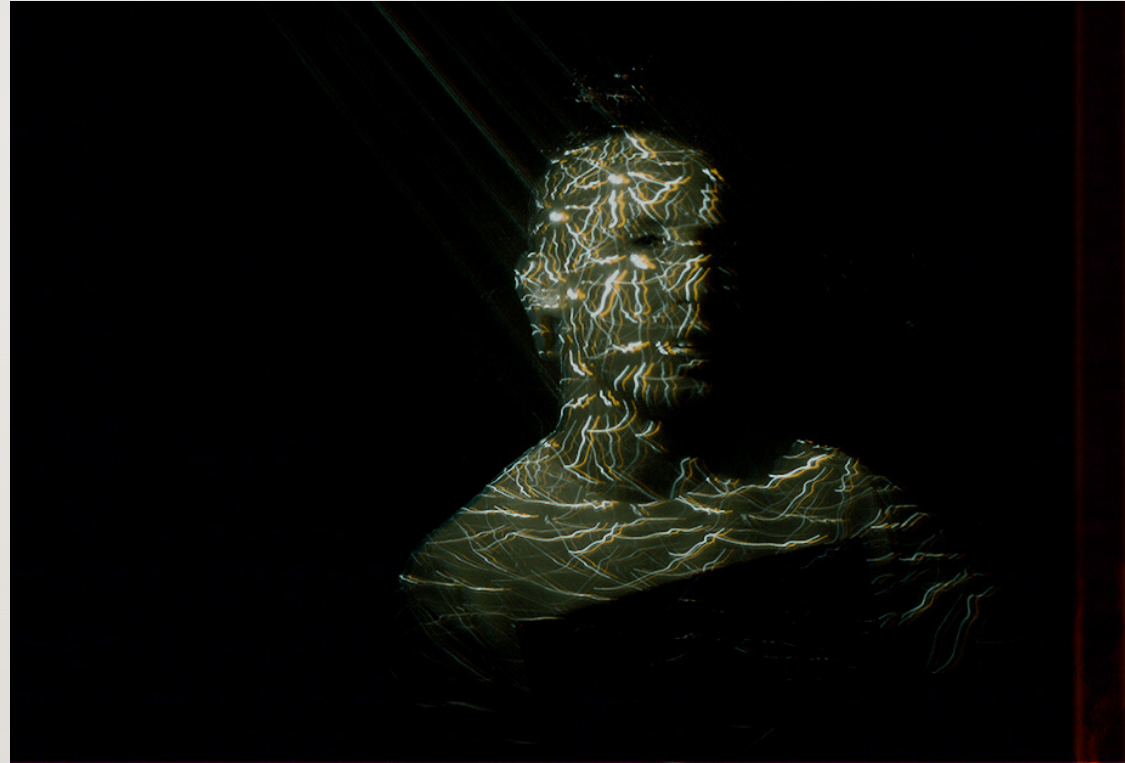
Wraiths Series

digital print on paper

8 x 10 inches

2020

"Wraiths are a journey through the synesthetic boundary of sound masquerading as light. This is from a series isolating ways to express sound as color, light, energy and motion. I am a deaf artist. We are surrounded by the energy of the sound waves I do not hear."



giertz gallery
AT PARKLAND COLLEGE

Casey Lowry

Self Reflection

mixed media encaustic on wood
panel

34½ x 19½ inches

2020

"This piece is a self-portrait at age
40 in June of 2020."



giertz gallery
AT PARKLAND COLLEGE

Sarah Marjanovic

Redistribution

acrylic and hand-stitched thread on paper collage
with handmade paper of garlic mustard plant
material

10¾ x 5½ inches

2020

"Decomposition doesn't have to be the end, but the catalyst
for new growth. Essential components can be reassembled,
and the transfer of energy can begin anew."



giertz gallery
AT PARKLAND COLLEGE

Paula McCarty
Lois Mailou Jones
smartphone painting
4 x 2¾ inches
2019

"In 2017, I began using my smartphone and a painting app to paint historical women artists for an ongoing project, 'Women Who Painted'. This body of work is my way of paying homage to women painters who have become before me."



giertz gallery
AT PARKLAND COLLEGE

Ann McDowell
View From The Bridge
gouache
22 x 15 inches
2020

"The reflection of trees on water is interesting to look at and to paint."



Joyce D. Meyer
Formation
digital photograph
8¾ x 8¾ inches
2021

"It was a full moon. I wanted to
evoke all the mysteries of the
night."



giertz gallery
AT PARKLAND COLLEGE

Melissa Mitchell

We Lost So Much, But Found Our Hearts
digital photographic print on metallic paper
11 x 14 inches
2020

"Like just about everyone else, I spent a LOT of time at home in 2020, usually hanging out in my backyard refuge whenever possible. I passed the time by photographing practically every square inch of the property. I always marvel that I somehow manage to see something new - like this heart-shaped fungus that magically appeared one day around the time when people began displaying hearts on their windows and doors to show support for healthcare workers, solidarity with each other, and hope for the future."



Amanda Mitsdarfer

Nature's Beauty

photo collage

9 x 9 inches

2021

"This is a collage of photographs from around home, showing the beauty nature offers to us."



giertz gallery
AT PARKLAND COLLEGE

Charlie Mitsdarfer

Eye On The Ball

photograph

8 x 15 inches

2021

"I caught the moment before our youngest son got a hit in a summer ballgame. It sure is nice to be able to enjoy these moments!"



Patricia Monigold

Melissa And White Oak

(from the series People And Plants)

oil on canvas

20 x 16 inches

2019

"The subjects of my portraits are people going about their everyday lives. The detail about them that lured me now opens the door to exploration of the subject who generously agreed to pose."



giertz gallery
AT PARKLAND COLLEGE

Michael Murray

Stoneware Family - Fort Sheridan Earth Glaze

stoneware and earth matter

21 x 12 x 8 inches

2019

"This ceramic piece focus on repeated forms and geometric, modular construction. The glaze used in this work was hand-gathered from the forested ravines of Fort Sheridan, Illinois. Local clay and earth matter was collected, refined, and processed to create a unique field glaze specific to the particular location."



giertz gallery
AT PARKLAND COLLEGE

Christina Nordholm

Fall Wind

encaustic mixed media

48 inches (diameter)

2020

"Through memories, color and temperature
find their way into my painting."



giertz gallery
AT PARKLAND COLLEGE

Shannon Percoco

Doves

watercolor & acrylic on paper

24 x 18 inches

2021

"Birding, birdwatching, and watercolor painting have been key to my sanity during the pandemic. The birds have helped me in the most serene way."



giertz gallery
AT PARKLAND COLLEGE

Marli Pessin

Andrà Tutto Bene - Everything

Will Be Alright

acrylic paints and glitter on canvas

102 x 135 inches

2020

"I'm half Italian, hearing the devastation of the Covid-19 in Italy was heartbreaking. Children made hand-drawn rainbow flags with the expression "Andra tutto benne". This painting is my version of the rainbow flag, and captures the feeling of emotion, hope, solidarity and that everything will be alright."



giertz gallery
AT PARKLAND COLLEGE

Robert Petersen

Fu Dog

high-fired ceramic

24 x 10 x 14 inches

2021

"I was inspired by the Fu Dogs of Allerton to make my own version. My Fu Dog is based on the semi-feral mongrels that prowl about in Bali. She is sitting on a mobile home just as the Hindu Gods of Bali ride mythic creatures. The Mobile Home marks the edge of civilization where the banished Fu Dog reigns supreme."



giertz gallery
AT PARKLAND COLLEGE

Toni Pitts

We Were Both Stretching

digital photography

8 x 10 inches

2019

"The images I submitted represent my growth as a photographer. That growth has taken place behind the lens. Just as the egret was stretching to take off, I was stretching to learn a new skill."



giertz gallery
AT PARKLAND COLLEGE

Claire Pritchard

It's Kind Of Like Puzzle Pieces, Isn't It?

alcohol markers on paper

9 x 12 inches

2020

"I tend to think in shapes and color palates. Usually, when I start a piece, I clear my mind and think of what the pen wants to make. In this case, it made a puzzle, but that's open to interpretation."



giertz gallery
AT PARKLAND COLLEGE

Fraya Replinger

Sun Gazing

photograph

16 x 20 inches

2020

"This is a late summer sunrise. I love how the sunflowers are facing the sun as it rises."



giertz gallery
AT PARKLAND COLLEGE

Annelise Rhoads

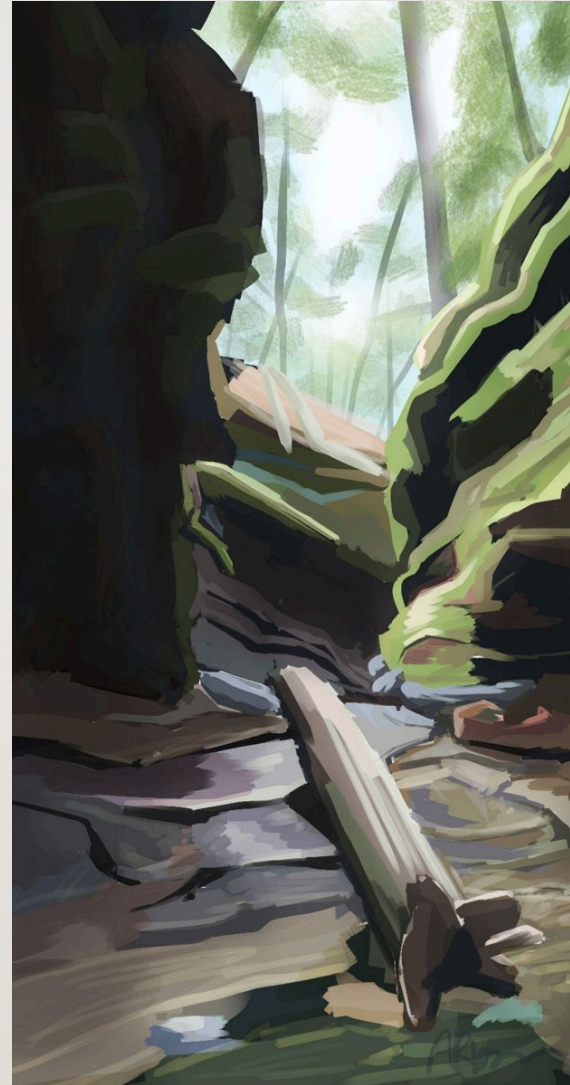
Landscape 2

digital print

18.3 x 9.6 inches

2021

"This is one in a series of digital prints exploring natural Midwest landscapes visited in recent months. This piece features Turkey Run State Park in Indiana."



giertz gallery
AT PARKLAND COLLEGE

Erica Robertson
Car Camping 10.20.20
variable
2020

"In May 2020, just graduated from college in DC in the midst of the COVID-19 pandemic, I moved into a red Rav4 and set off across the country. From Glacier, Montana to the Great Sand Dunes of Southern Colorado I drove, hiked, and swam, challenging myself to capture the beauty around me as best I could."



giertz gallery
AT PARKLAND COLLEGE

Mandy Roeing

Bend In The Road

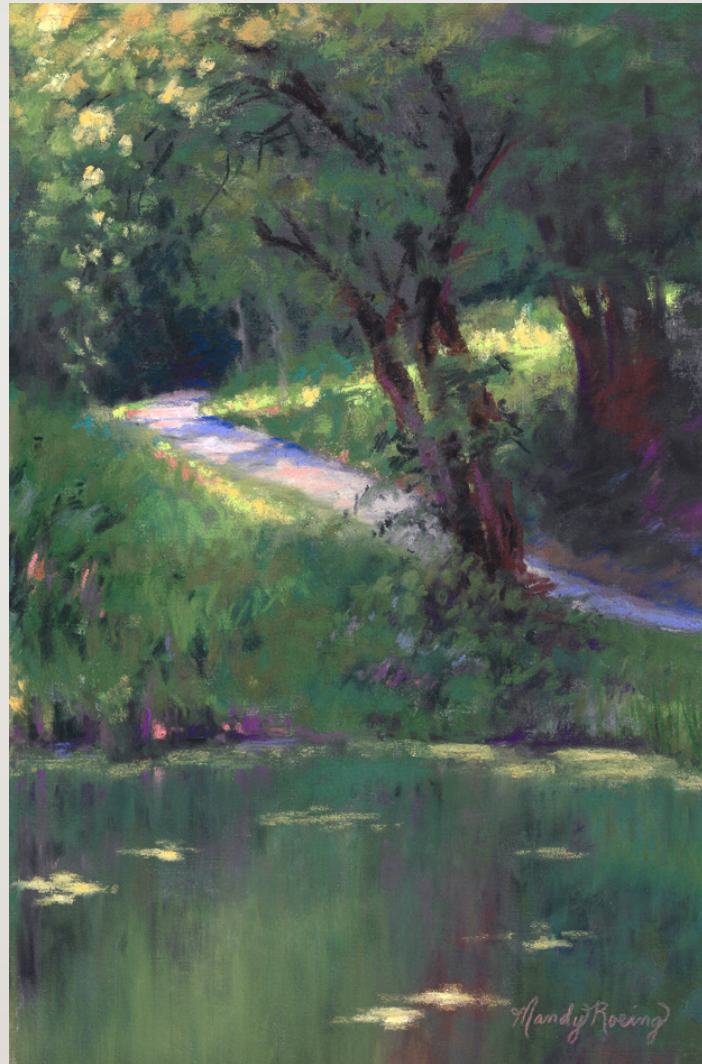
soft pastels on Wallis professional grade

sanded pastel paper

12 x 8 inches

2020

"I find being surrounded by nature's beauty both soothing and invigorating. I love the effect it has on me and want to translate those emotions through color, light, and form into paintings to be experienced by others."



giertz gallery
AT PARKLAND COLLEGE

Gail Rost

Tree Stump #1

fabric, polyester filling, thread

3 x 10 x 15 inches

2020

"The isolation I experienced through COVID-19 required me to look closely and deeply at my world. This piece shares my increased fascination with, and love for, mature trees and their layers as a metaphor for the layers of our lives."



Ann Rund

Ivesdale Standard

watercolor

8 x 11 inches

2020

"Growing up in a small town, stations were often the local meeting place. Although it is currently closed, it is a reminder of my youth in rural Illinois."



Andrea Shields

Kainchi Vision

watercolor on paper

21½ x 27½ inches

2018

"Kainchi, with its ashram founded by Maharajji Neem Karoli Baba, is one of many sites, high in the Himalayas, that have been sanctified by yogis and holy men over centuries. This painting seeks to lead the viewer to a discovery of wholeness, moving through energy and light toward a figure of center and self with its immersion in spirit."



giertz gallery
AT PARKLAND COLLEGE

Birute Simaitis

Dinner Time

watercolor on Yupo paper

11 x 14 inches

2020

"Experimenting with Yupo Paper was a pleasant surprise. The paint seems to have a mind of its own. I found myself painting more loosely, more spontaneously."



giertz gallery
AT PARKLAND COLLEGE

Lynn Hawkinson Smith

Tufted Titmouse

colored pencil and graphite pencil on
drawing board

16 x 20 inches

2021

"This beautiful little bird is a common visitor to
my bird feeder. I drew the Tufted Titmouse in
colored pencil and did the background with a
graphite pencil."



giertz gallery
AT PARKLAND COLLEGE

David Spears

John Lewis

polyester resin

18 x 10 x 12 inches

2020

"As a child of the Sixties, I regret the loss of those who have fought to unite our country for all of its citizens. John Lewis's life's work and ideals inspired me to capture the essence of this great man."



giertz gallery
AT PARKLAND COLLEGE

Phil Strang

Edge Of Time

acrylic paint on textured canvas

16 x 20 inches

2020

"This painting is my representing 2020."



Bonnie Switzer

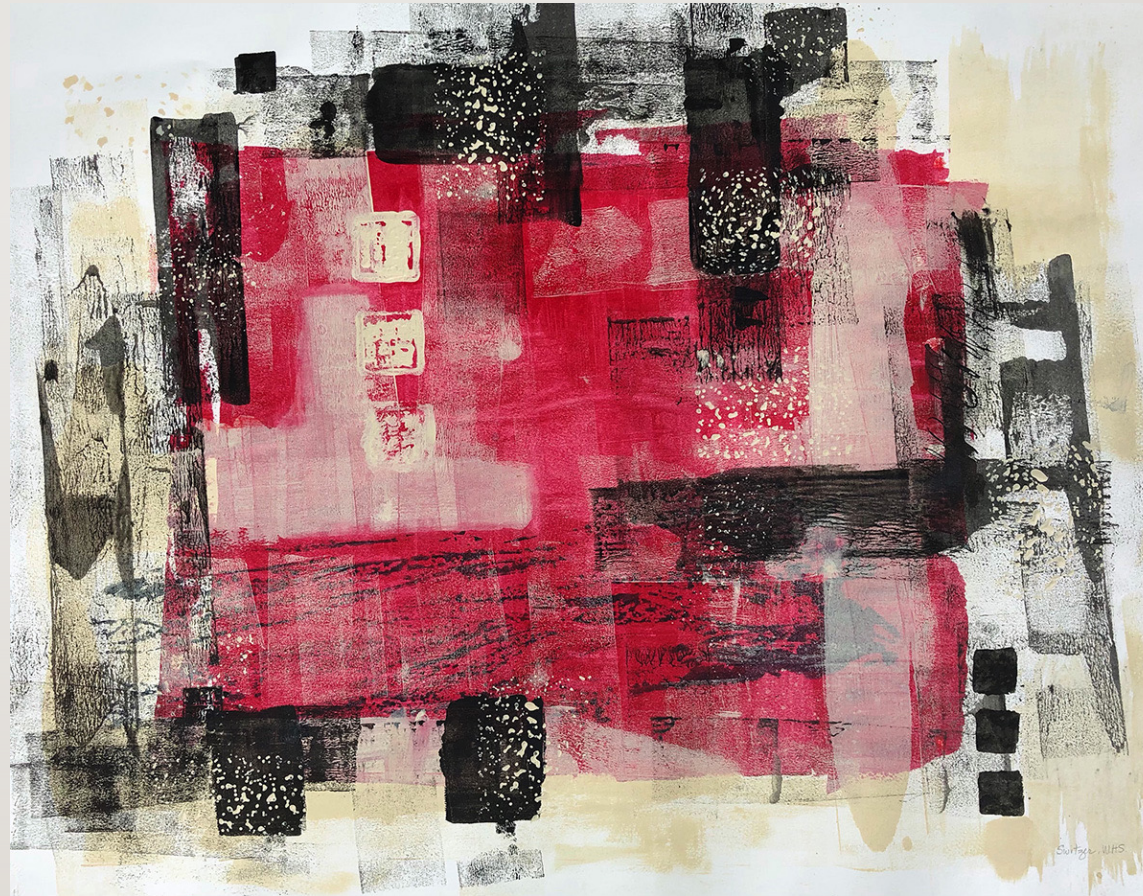
Red Rendezvous

acrylic on paper

20 x 25½ inches

2020

"This painting was one of a series in which I experimented with applying the paint with a small roller. After the initial layers, I pressed various stamps dipped in paint into the painting to enrich the composition."



Mohan Tracy

Treeful Of Life

quilting and applique on fabric

36" x 36"

2021

"Remembering the Tree of Life, I wanted to create an image of a tree as a center for bird life. This piece was machine pieced and quilted, then enhanced with hand embroidery."



giertz gallery
AT PARKLAND COLLEGE

Natalie Troyer

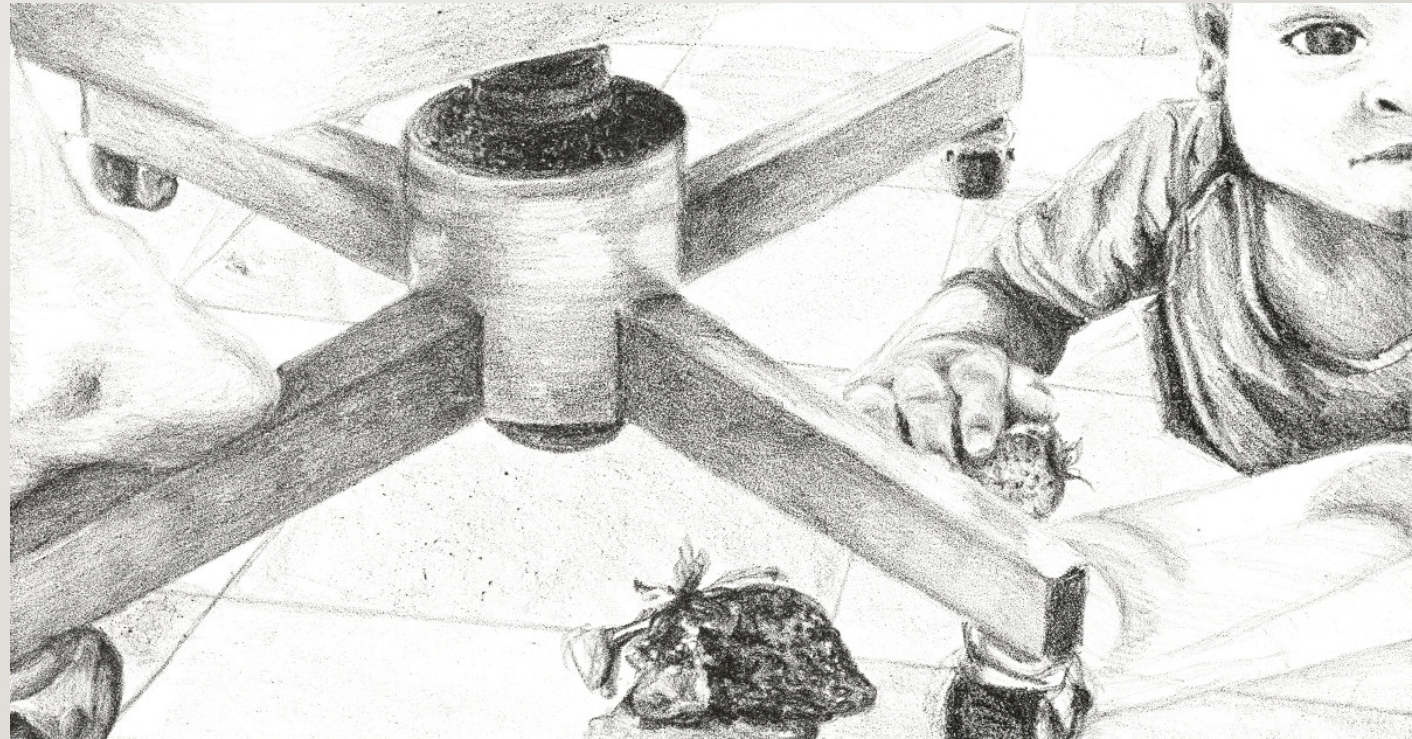
Yearning Strawberries

lithograph

9 x 12 inches

2018

"Exploring narrative, memory and ACEs (Adverse Childhood Experiences) influence my work. This lithograph depicts my little sister, Raquel, unsupervised as she crawls around on the floor and underneath the desk chair unknowingly foreshadowing the squashed strawberry."



giertz gallery
AT PARKLAND COLLEGE

Miriam Tworek-Hofstetter

Suddenly On The Road

watercolor and graphite

6½ x 3¾ inches

2020

"This is a painting of the country road leading to my family's house in Nebraska. It's inspired by a photo I took walking home one morning as a weather system approached."



Kuldeepa Vartak-Mehta

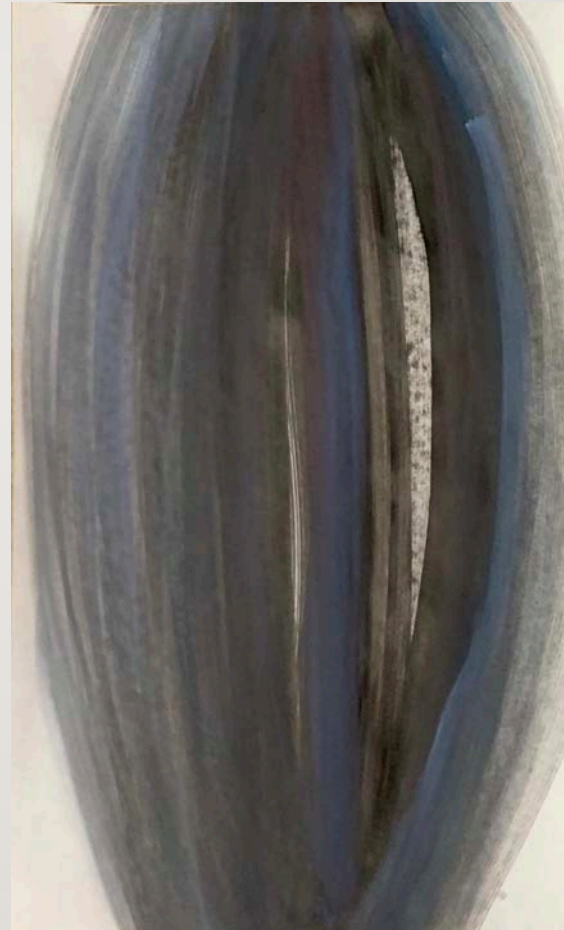
Seeds Of Self

watercolors and ink on paper

8 x 13 inches

2020

"A Cell, a Zygote is result of a long preceding cycle, containing potential for creating a Cosmos. It might be the same process to rebirthing the Self."



giertz gallery
AT PARKLAND COLLEGE

David Wantroba

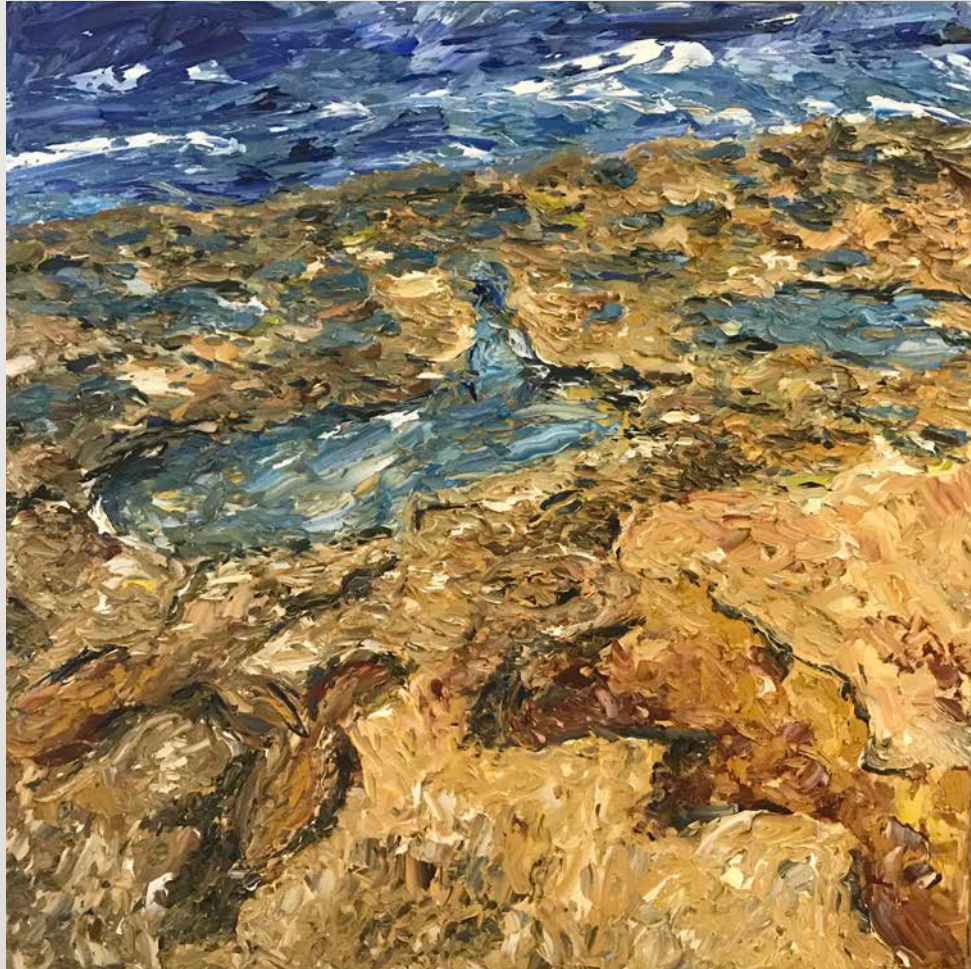
Beach Stroll

oil on canvas

24 x 24 inches

2020

"I've been working with oils these past 10 years and I wanted to decorate my house with some abstract works. I've been drawing inspiration from vacation travels and everyday observations. My inspiration came from a beach pic I took."



Rosalind Faiman Weinberg

Pain

hand-pulled, hand-printed monoprint .

10 x 8 inches

2019

"In 2019, I was diagnosed with a blood cancer, multiple myeloma, a cancer of the blood plasma that takes over the bone marrow and causes a series of bone fractures, scoliosis, anemia and weight loss. During that year I did a series of about 30 hand-pulled, hand-printed pieces which I realized in retrospect, was describing my disease and treatment."



giertz gallery
AT PARKLAND COLLEGE

Catherine Wiesener

Hang In There

stoneware, glaze

3 x 6 x 6 inches each

2021

"This is an almost matched set of bowls with a satin interior glaze and white exterior glaze. The decoration is an elaboration of a doodle that I regularly make. The title comes from the ubiquitous 80's poster of a cat hanging from a tree branch. In some way, the art that I have been able to make this past year was an act of doing just that...hangin' in there."



giertz gallery
AT PARKLAND COLLEGE

Melinda Wilcox

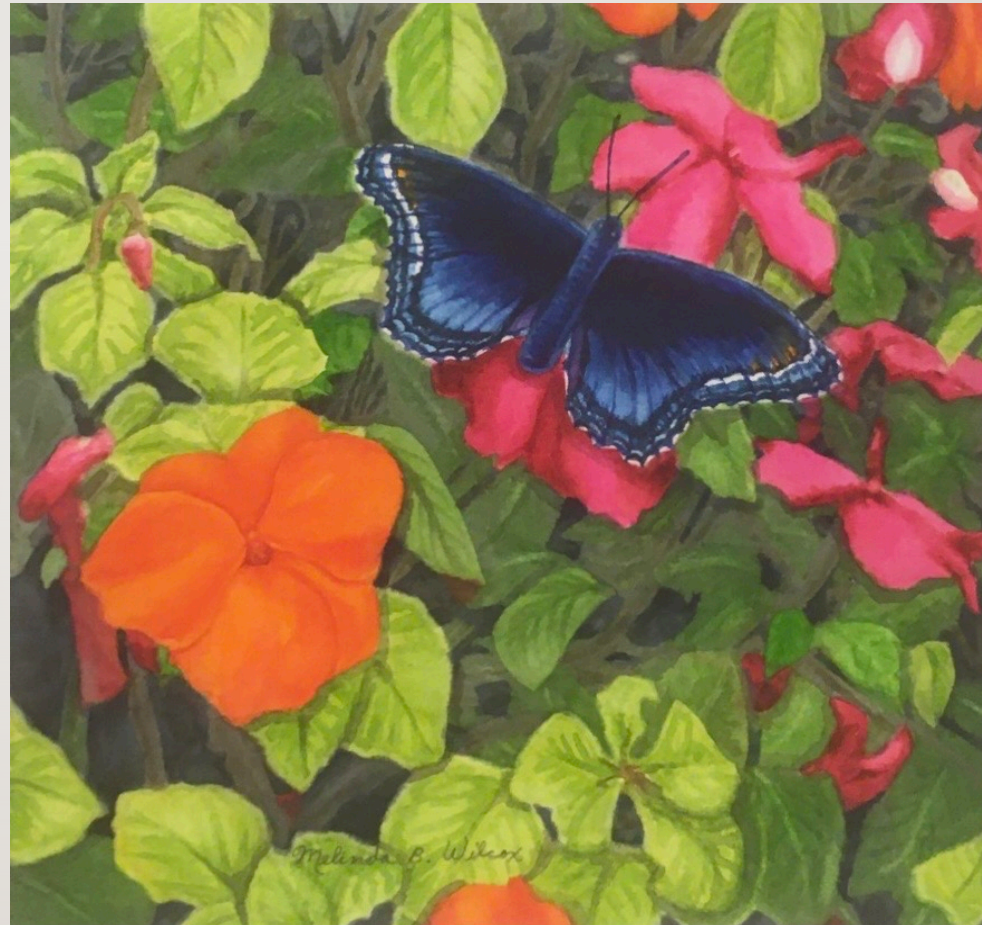
Blue Butterfly

watercolor

8 x 8½ inches

2019

"I am very much into color, especially rich blues and roses and oranges."



giertz gallery
AT PARKLAND COLLEGE

Charles Wisseman

Golden Spiral Cross-Sections

epoxy, bone, antler, hoof, rawhide,
sticks, pencil, seed pods, minerals,
gourd, wasp nest, bark

10 x 14 inches

2020

"Cross sections of mostly natural materials
embedded in epoxy. A golden spiral structure of
white bone and antler emerges from the
surrounding randomness of organic and mineral
materials."



giertz gallery
AT PARKLAND COLLEGE

Sarah Wisseman

Pods

oil on canvas

14 x 16 inches

2018

"As a former archaeologist, I see the world in layers. Growing up on the East Coast with summers on Cape Cod or Maine probably explains my preference for woods, water, and sky."



giertz gallery
AT PARKLAND COLLEGE



CONGRATULATIONS!



giertz gallery
AT PARKLAND COLLEGE